

E Teaching Bulletin

Four picture screens demonstrated what you need.....

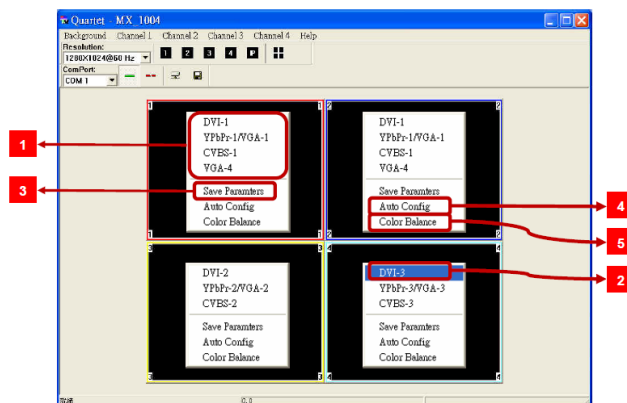
The **MX-1004PF/K Quad-View Video Processor Series** is an advanced video processor for multimedia presentations. It is an ideal solution for applications where up to four video signals must be displayed on a single display. It supports up to 10 video inputs, of which four can be outputted simultaneously with the desired display layout through software control, such as centralized control the keyboards and mouses from four computers. The advanced video processor allows you to manipulate output images, wherever positions and whatever sizes you want for viewing two computers or two video signals or a combination.

The embedded scaler converts signals from input sources to match the native resolution of monitors, flat panel displays, projectors as well as user-selectable output settings up to WUXGA (1920x1200). Dual outputs are provided in both analog (VGA) and digital (DVI) format, one is connected to remote display and the other is connected to on-site display for real time monitoring.

- Four VGA, three DVI, three component and three composite inputs, from 640x480 to 1920x1200, interlaced or progressive.
- Dual outputs (DVI / VGA), 640x480 to 1920x1200.
- Can be cascaded to obtain more images.
- Image parameters and layouts are automatically saved in flash memory and can be recalled for later use.
- Several image parameters and layouts can be saved in computers and can be loaded for later use.
- Video parameters adjustable (brightness, contrast, color temperature, etc.) (only for VGA and YPbPr input).
- User-selectable output settings, up to 1920x1200.
- Perfectly as a video screen splitter, a video converter and a video switcher.
- Firmware upgradable for support of new features and technology enhancements.
- Software control through RS-232, RS-485 over Cat-5.
- Automatically power-saving mode.
- 1U size.

Software Operation :

- Resize, position, flip, zoom & pan and blend output video through software as well as titles, borders and colored backgrounds.
- Quick setup for full screen display
- Quick setup for PAP mode
- Quad Display mode
- Display area number
- Save Parameters for all channels



Specification:

Model	MX-1004PF	MX-1004K
Input	29-pin DVI-I x 4	29-pin DVI-I x 4
	RGB 15-pin D-sub x 4	
	component x 4	component x 4
	composite x 4	Composite x 4
	S-Video x 4	S-Video x 4
Output	29-pin DVI-I x 1	
	RGB 15-pin D-sub x 1	
Keyboard/ Mouse Input	NO	PS/2 x 2
		USB x 4
Control	RS-232, RS-485(RJ-45) (software CD)	
Power	100-240V AC 50/60Hz	
consumption	35 W	
Dimensions	W44 x D33 x H4.4 (cm)	



▲MX-1004PF front back view



▲MX-1004K front back view



Meicheng®

MEI CHENG AUDIO VIDEO CO., LTD.

Address: 13F, No. 2, Jian 8th Rd., Zhonghe Dist., New Taipei City 23511, Taiwan
 Tel: +886(2) 8228 0311, Fax: +886(2) 8228 0319
 Website: www.meicheng.com.tw Email: mei.cheng@msa.hinet.net